



## WAREHOUSE MANAGEMENT

TRAVERSE Warehouse Management is a comprehensive solution expressly designed to give you precision inventory handling. Dramatically improve your efficiency in picking, packing and shipping orders by maximizing the productivity of your warehouse staff. Consistently prompt order fulfillment is within your reach with TRAVERSE Warehouse Management.

### Inquiry Functions:

- Item Quantity Inquiry
- Detail History Inquiry
- Batch Codes List
- Item Explorer Inquiry

### Daily Work Functions:

- Release Orders
- Picking List
- Export Released Orders
- Record Picked Orders
- Receive Goods
- VICS compliant Bill of Lading
- Location Transfers
- Post Location Transfers
- Adjustments
- Post Adjustments
- Move Quantities
- Receive Production

### Reports and Worksheets:

- Location Transfers Journal
- Location Transfers Report
- Location Transfers Packing List
- Adjustments Journal
- Detail History Report

### Periodic Processing:

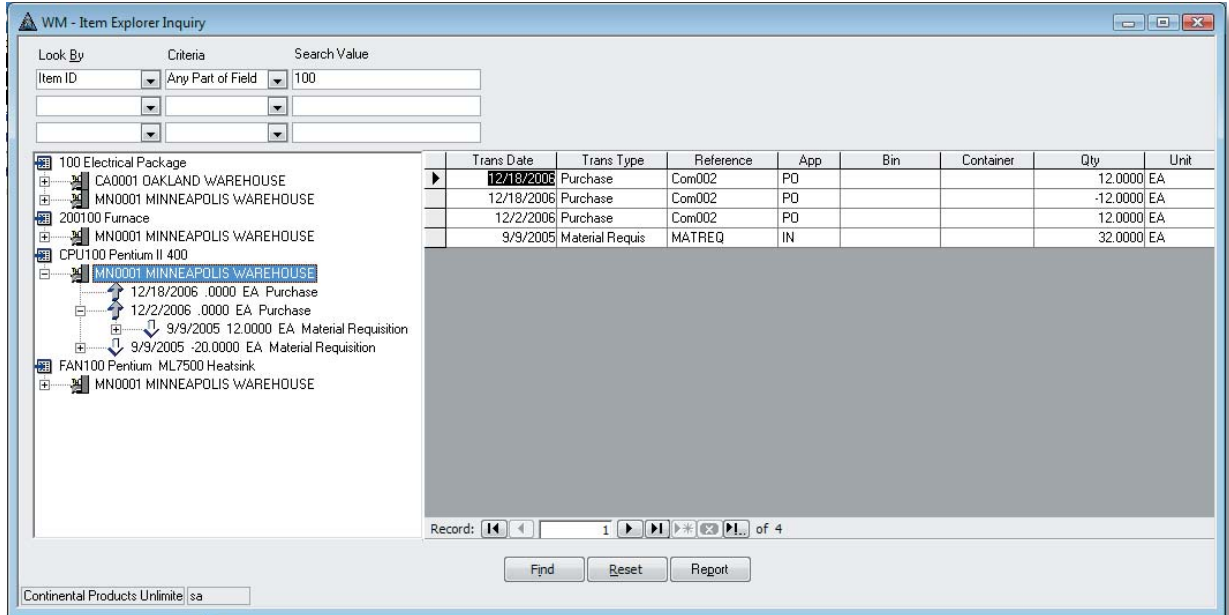
- Periodic Maintenance

### Setup and Maintenance:

- Bins
- Containers
- Business Rules
- Batch Codes

### Master Lists:

- Bin List
- Container List
- Batch Codes List



*Use the Item Explorer function to track lotted and serialized inventory. You can track the production order in which a lot number was used as well as who the specified lot was sold to.*